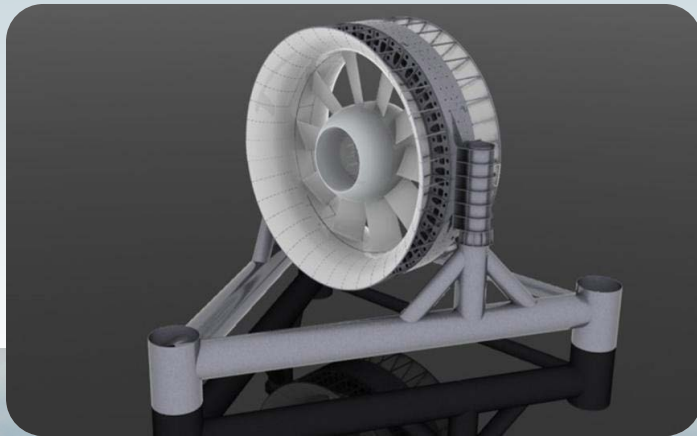


ADMIRALTY INLET PILOT TIDAL PROJECT

FERC PROJECT NO. 12690

APPLICATION for a NEW PILOT PROJECT LICENSE (MINOR WATER POWER PROJECT)



VOLUME III

APPENDICES A-F, H-P

**Public Utility District No. 1
of Snohomish County**



February 29, 2012

U.S. Department of Energy
University of Washington
HDR | DTA

Sound & Sea Technology
OpenHydro Group Limited
Pacific Northwest National Laboratory

Prepared with additional assistance from:

SMRU Limited
Northwest National Marine Renewable Energy Center
National Renewable Energy Laboratory
BioSonics, Inc.
Sandia National Laboratory
Van Ness Feldman GordenDerr
Electric Power Research Institute
Evans-Hamilton, Inc.
Fugro Survey Limited
Global Diving & Salvage
Beam Reach Marine Science and Sustainability School
The Whale Museum
The Orca Network
Golder Associates

APPLICATION CONTENTS

Volume I

Executive Summary
Initial Statement
Justification Statement
Process Plan
Exhibit A – Project Description
Exhibit F – General Design Drawings of the Principal Project Works
Exhibit G – Project Maps

Volume II

Exhibit E – Environmental Report

Volume III

Appendix A – Proposed Protection, Mitigation, and Enhancement Measures
Appendix B – Benthic Habitat Monitoring Plan
Appendix C – Derelict Gear Monitoring Plan
Appendix D – Water Quality Monitoring Plan
Appendix E – Project Safeguard Plans
Appendix F – Horizontal Directional Drilling Plan
Appendix H – Adaptive Management Framework
Appendix I – Financial Assurance Plan
Appendix J – Legal Provisions Conveying Right to Engage in Business of
Developing, Transmitting, and Distributing Power
Appendix K – Assessment of Strike of Adult Killer Whales by an OpenHydro Tidal
Turbine Blade
Appendix L – Pre-Installation Study Reports
Appendix M – Historic Properties Information and DAHP Concurrence
Appendix N – Stakeholder Consultation
Appendix O – Detection of Tidal Turbine Noise: A Pre-Installation Case Study for
Admiralty Inlet, Puget Sound
Appendix P – Effects of Tidal Turbine Noise on Fish Hearing and Tissues

Volume IV

Appendix G – Applicant Prepared Draft Biological Assessment

