

Annex B

Benthic Survey Information  
(from Titan 2002)

## *CONTENTS*

Figure 1: Benthic survey – Sampling site positions, November 2001.

Figure 2: Benthic survey – Proposed Wind Farm area, November 2001.

Figure 3: The number of taxa recorded at each of the sampling stations.

Figure 4: The number of individuals per grab at each of the sampling stations.

Figure 5: The calculated value of the Margalef richness index for each of the sampling stations.

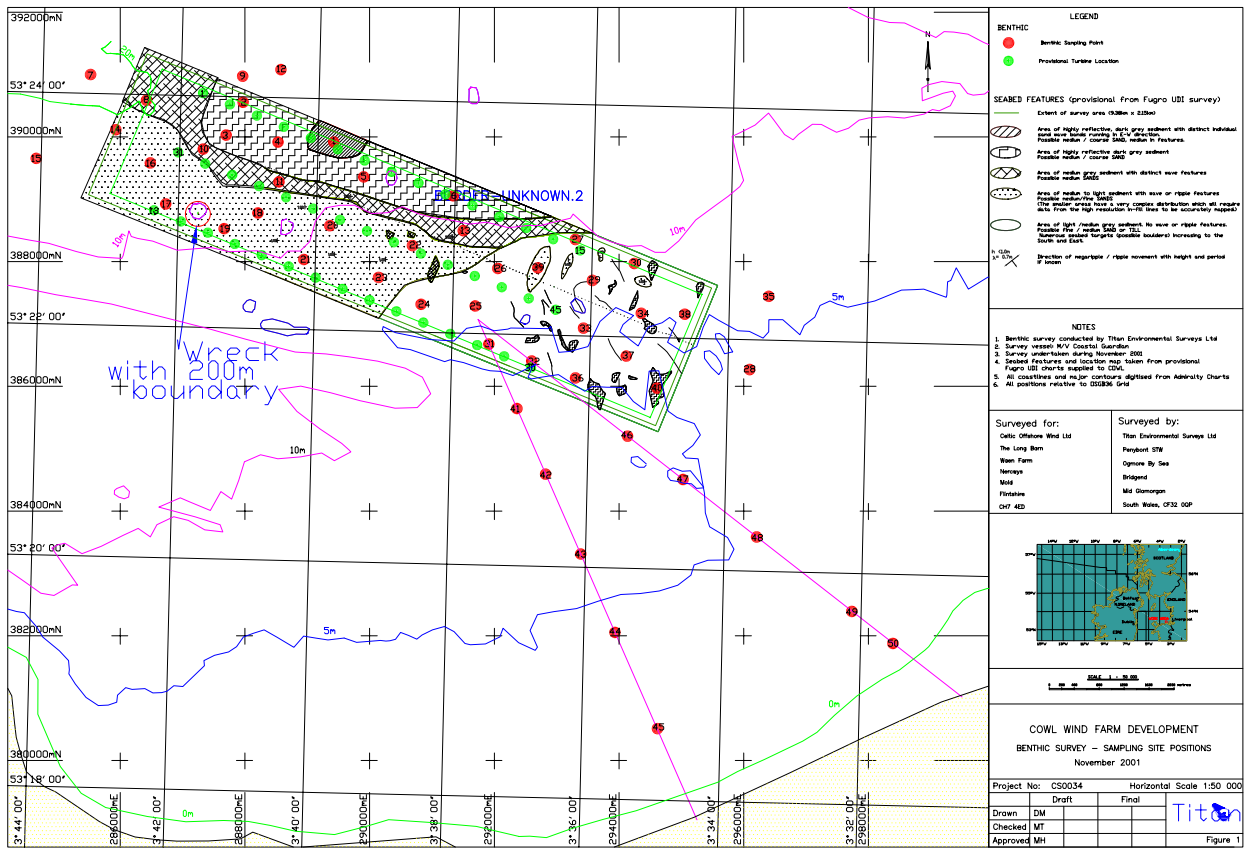
Figure 6: The calculated value of the Shannon-Weiner diversity index for each of the sampling stations.

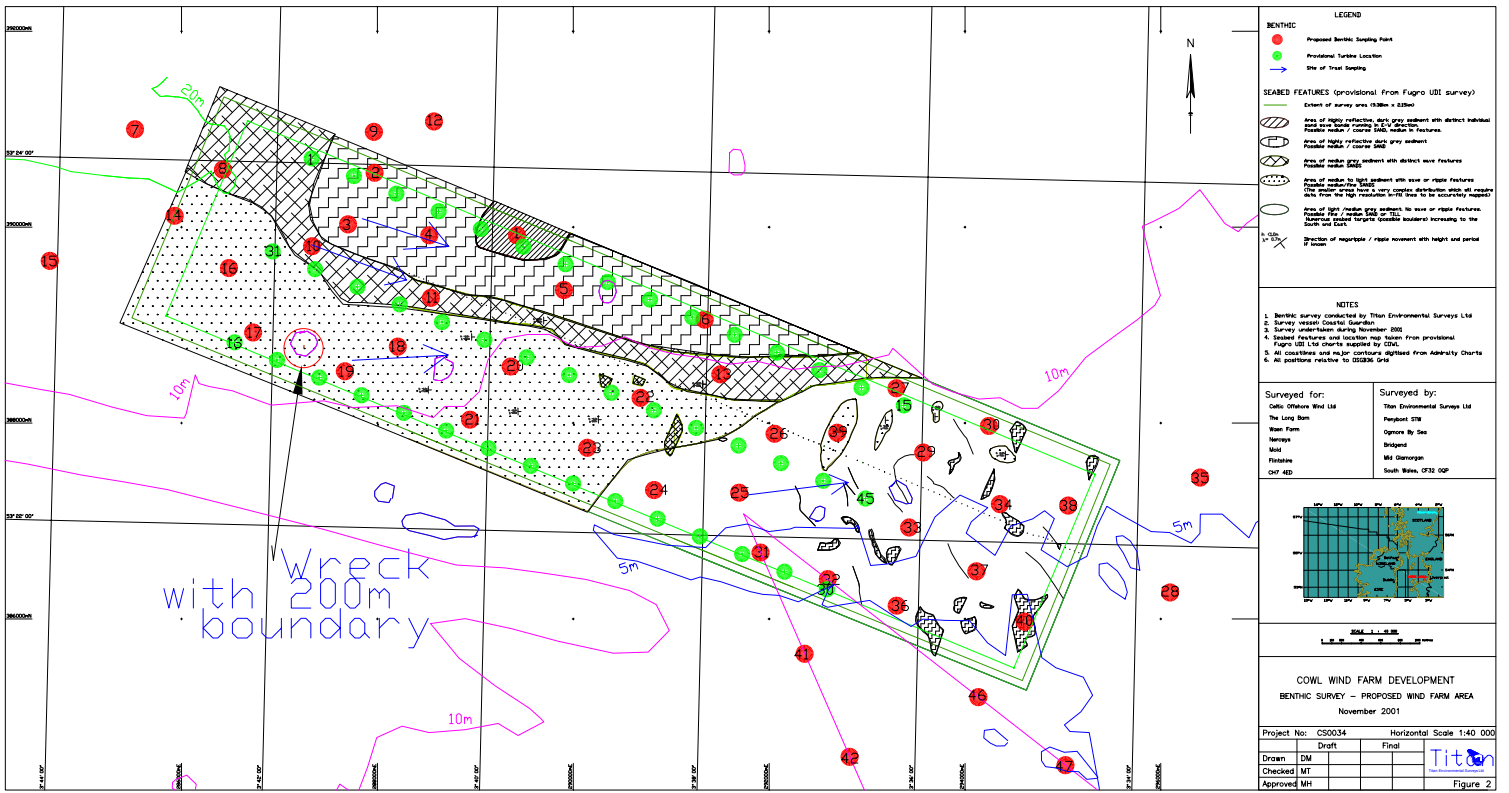
Figure 7: Dendrogram of the result of cluster analysis of the biological data from each of the sampling stations. Overlay shows sediment size fractions.

Figure 8: The spatial distribution of stations assigned to each of the cluster groups.

Figure 9: The percentage of sediment in each size category at each of the sampling stations.

Figure 10: Spatial distribution of Turbidity and Suspended Solids.





**LEGEND**

- Proposed Benthic Sampling Point
- Provisional Turbine Location
- Site of Trawl Sampling

**SEABED FEATURES (provisional from Fugro IBI survey)**

- Extent of survey area (330m x 220m)
- Area of highly reflective, grey silt sediment with distinct individual shells and rubble (mostly 10-20cm)
- Possible rubble / coarse SMD, medium to fine features
- Possible rubble / coarse SMD
- Area of medium SMD sediment with distinct wave features
- Area of medium to high sediment with wave or ripple features
- Area of low / medium SMD sediment, no wave or ripple features
- Area of coarse / medium SMD sediment, no wave or ripple features
- Area of coarse / medium SMD sediment, no wave or ripple features
- Area of coarse / medium SMD sediment, no wave or ripple features
- Area of coarse / medium SMD sediment, no wave or ripple features

**NOTES**

- Benthic survey conducted by Titan Environmental Surveys Ltd
- Survey vessel Coastal Guardian
- Survey undertaken during November 2001
- Seabed features and location map based on provisional Fugro IBI Ltd charts supplied by COWI
- All coordinates and major contours digitised from Admiralty Charts
- All positions relative to OSDBM Grid

Surveyed for: Catic Offshore Wind Ltd  
The Long Barn  
Wain  
Narrows  
Ward  
Fishes  
DIP 4ED

Surveyed by: Titan Environmental Surveys Ltd  
Pauline STE  
Cottony By Sea  
Isle of Wight  
M1 Garroghan  
South Wain, 0732 00P

**COWL WIND FARM DEVELOPMENT**  
BENTHIC SURVEY - PROPOSED WIND FARM AREA  
November 2001

Project No: CS0034 Horizontal Scale 1:40 000

Drawn	DM	Draft	Final
Checked	MT		
Approved	MT		

**Titon**  
Figure 2

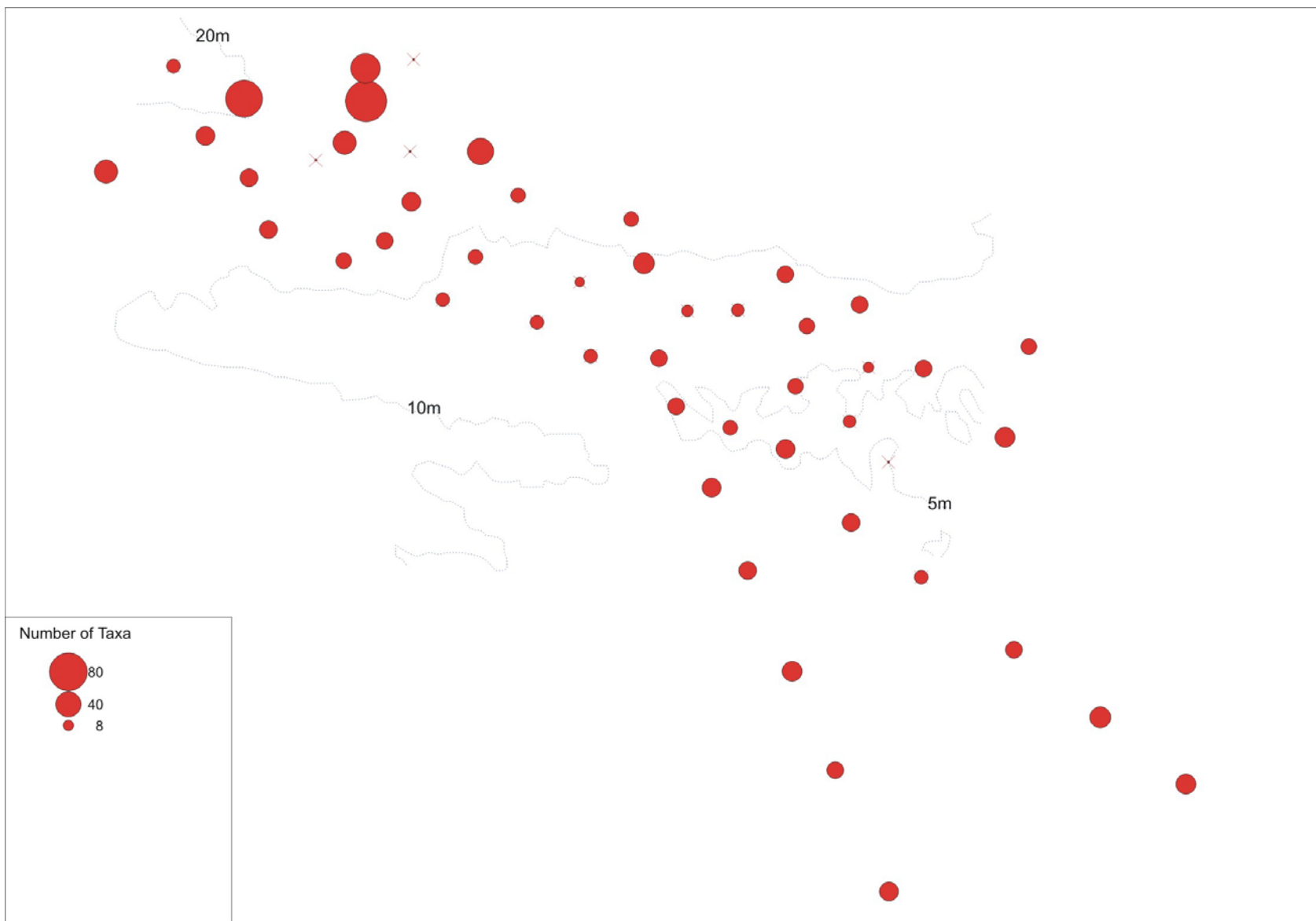


Figure 3. The number of taxa recorded at each of the sampling stations.

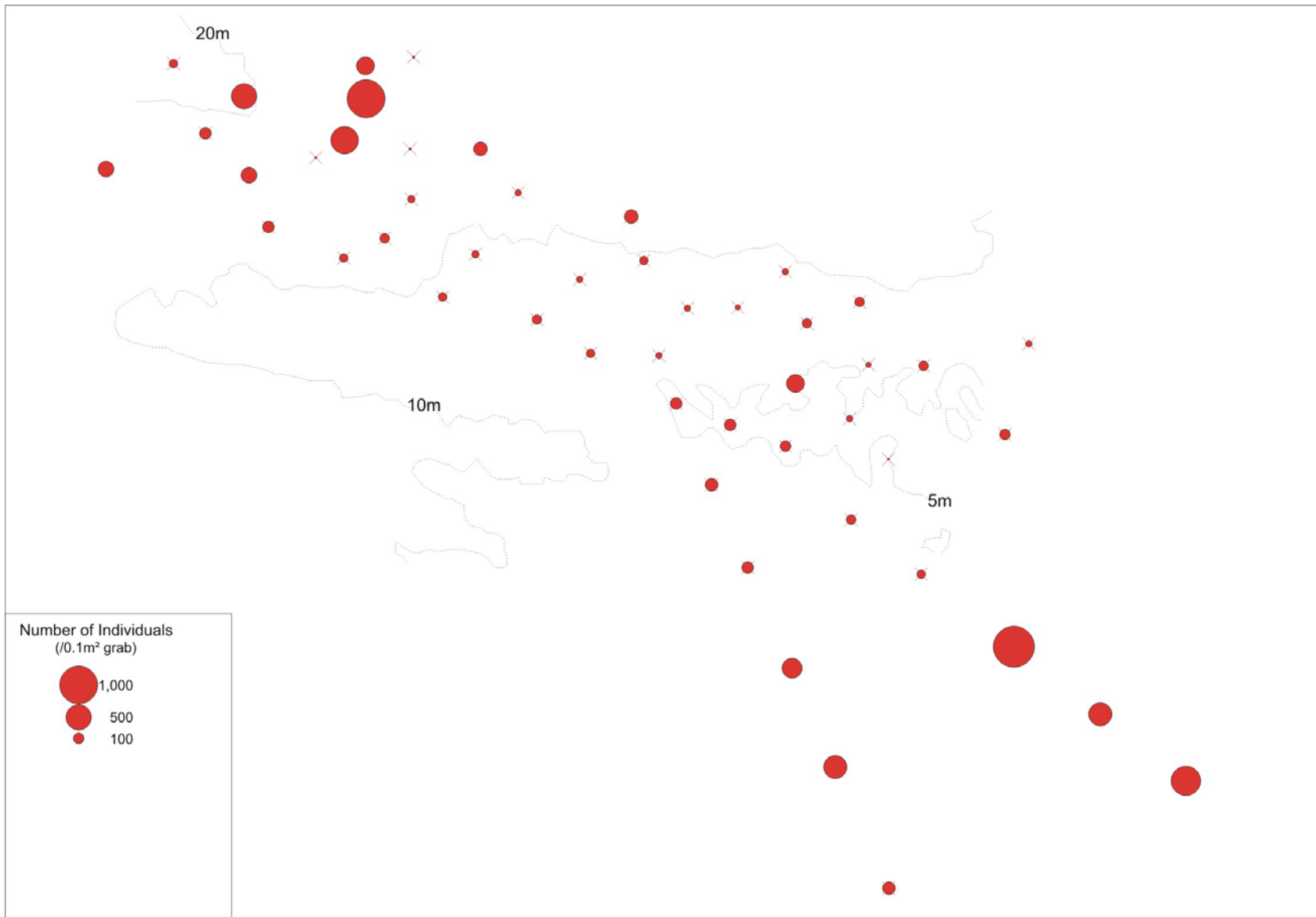


Figure 4. The number of individuals per grab at each of the sampling stations.

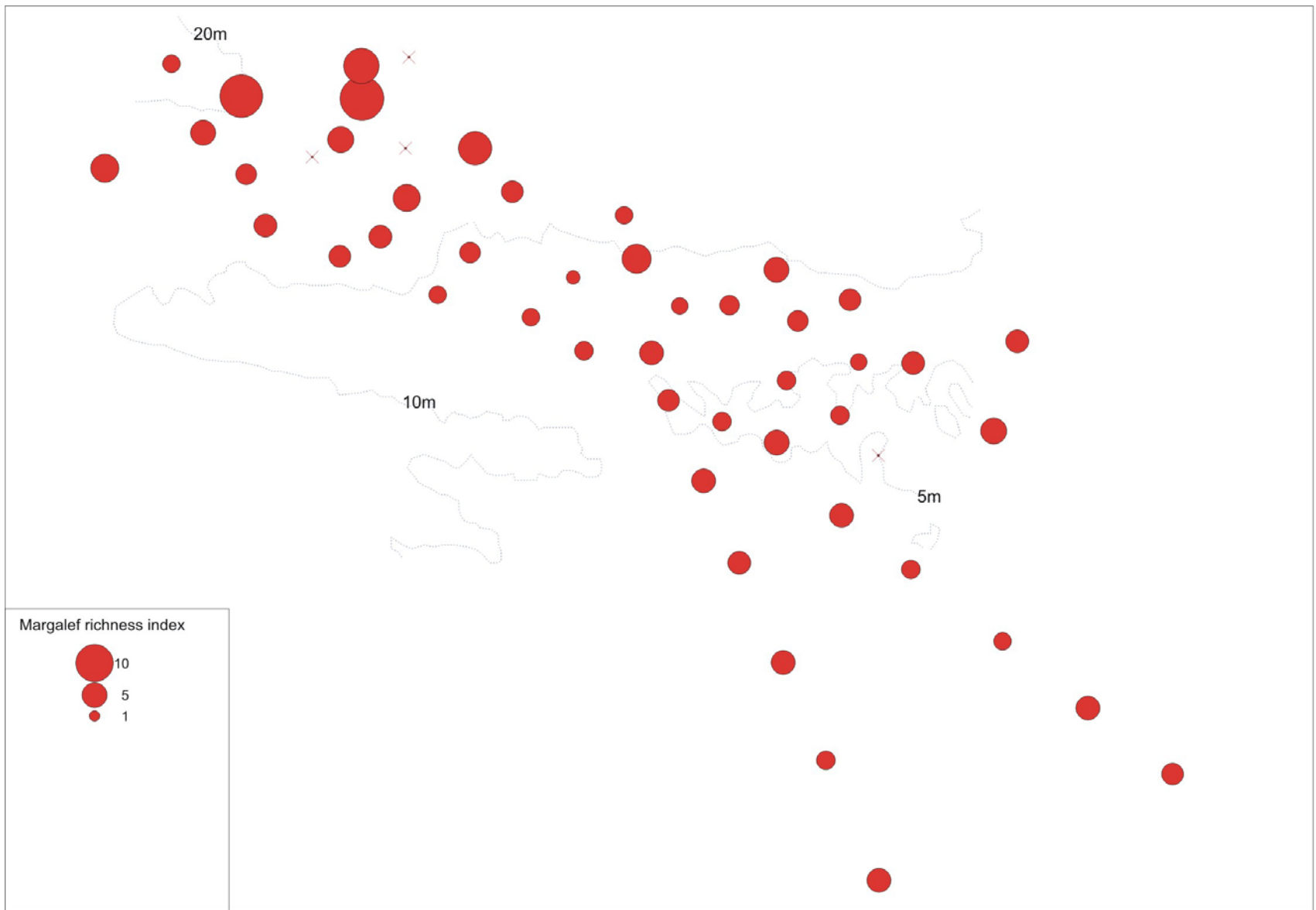


Figure 5. The calculated value of the Margalef richness index for each of the sampling stations

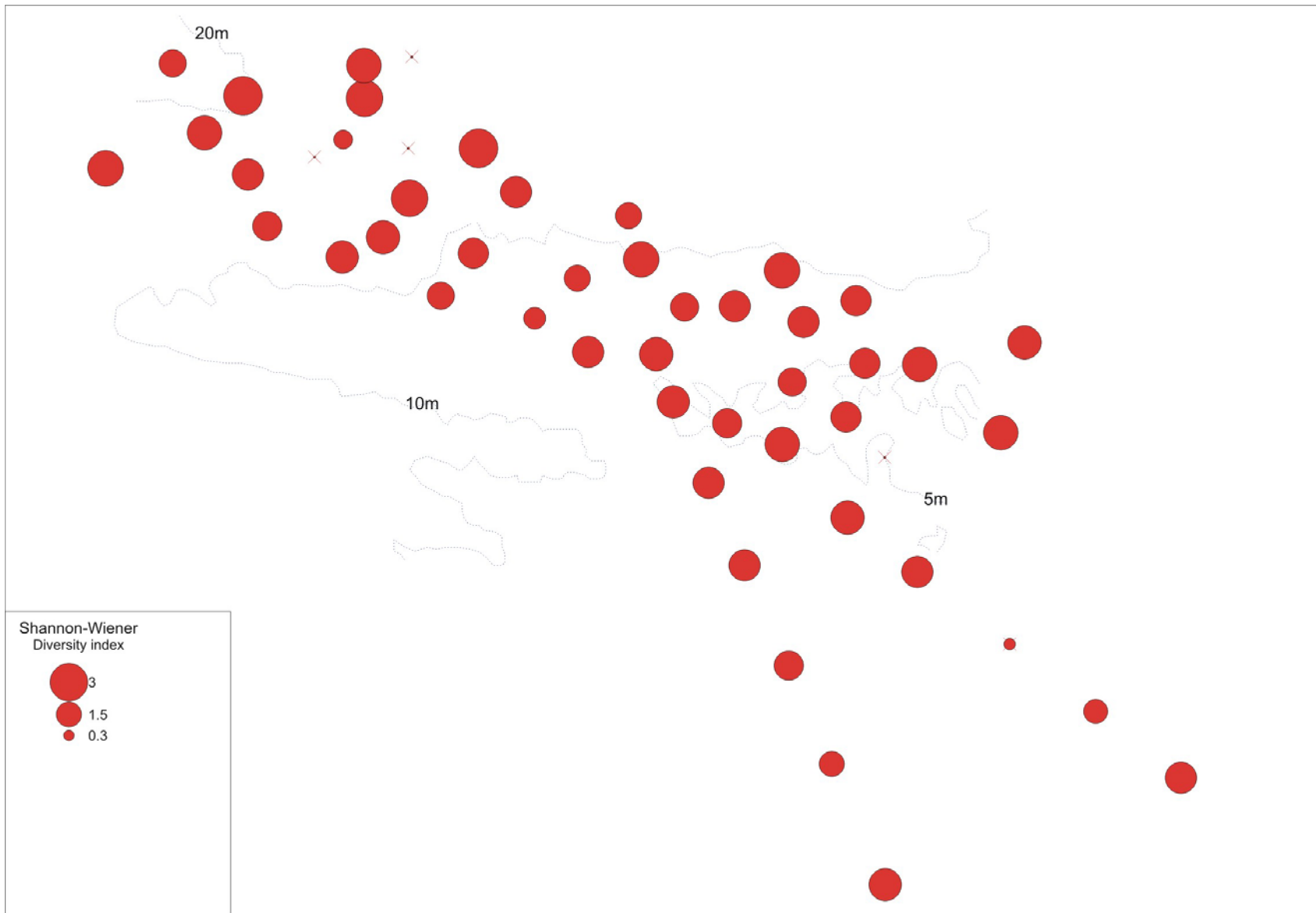


Figure 7 The calculated value of the Shannon-Wiener diversity index for each of the sampling stations.



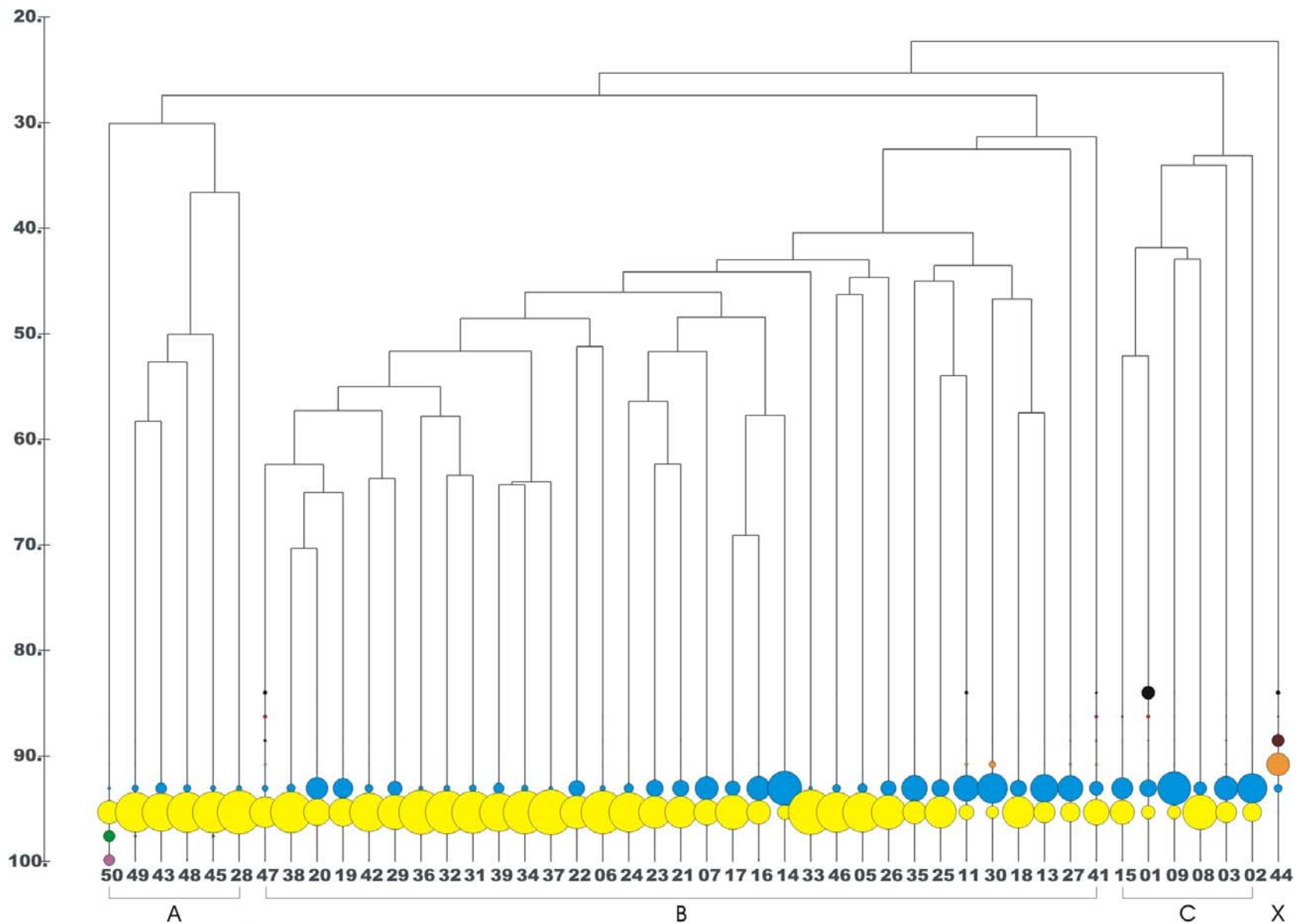


Figure 7. Dendrogram of the result of cluster analysis of the biological data from each of the sampling stations. Overlay shows sediment size fractions

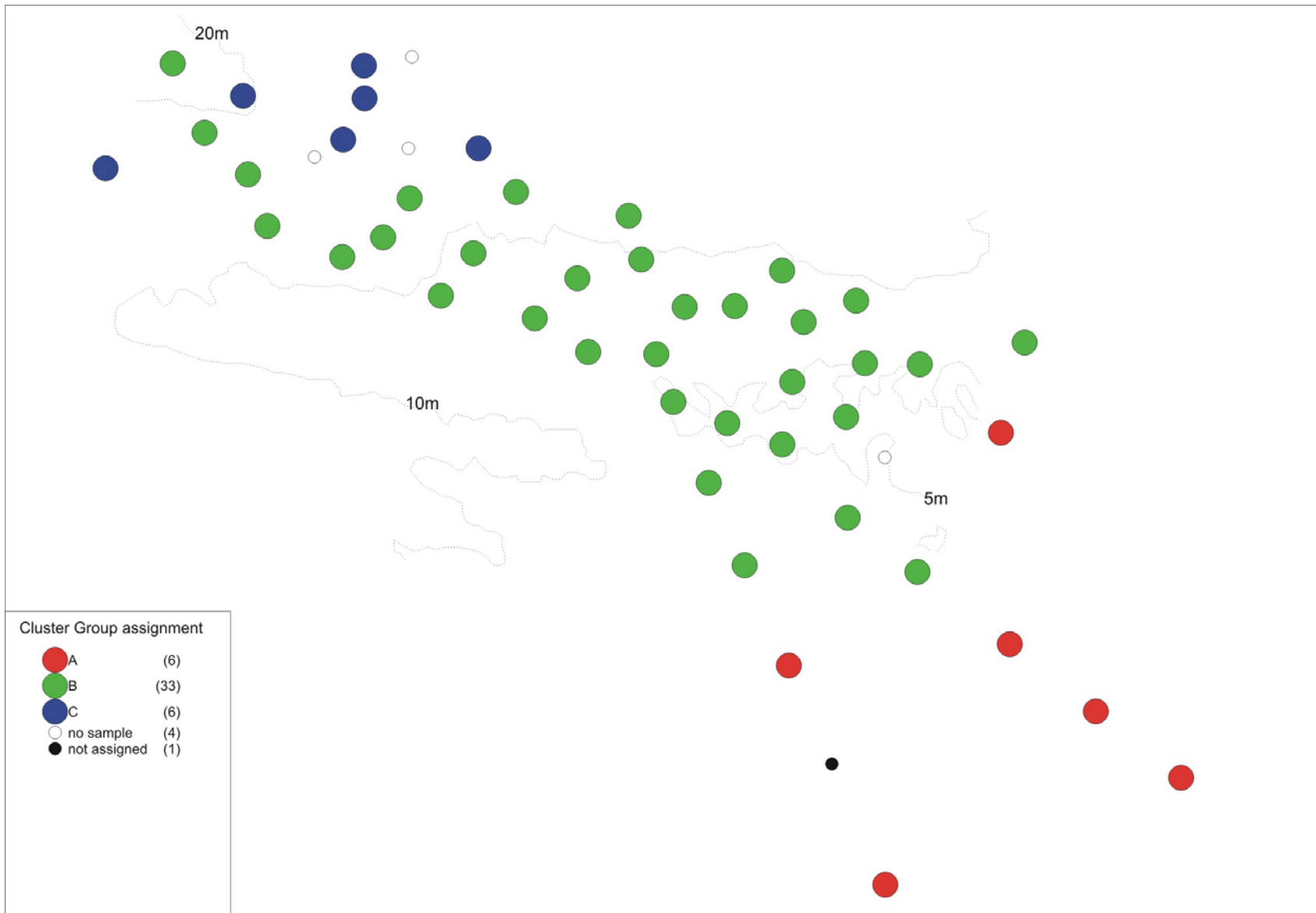


Figure 8. The spatial distribution of stations assigned to each of the cluster groups.

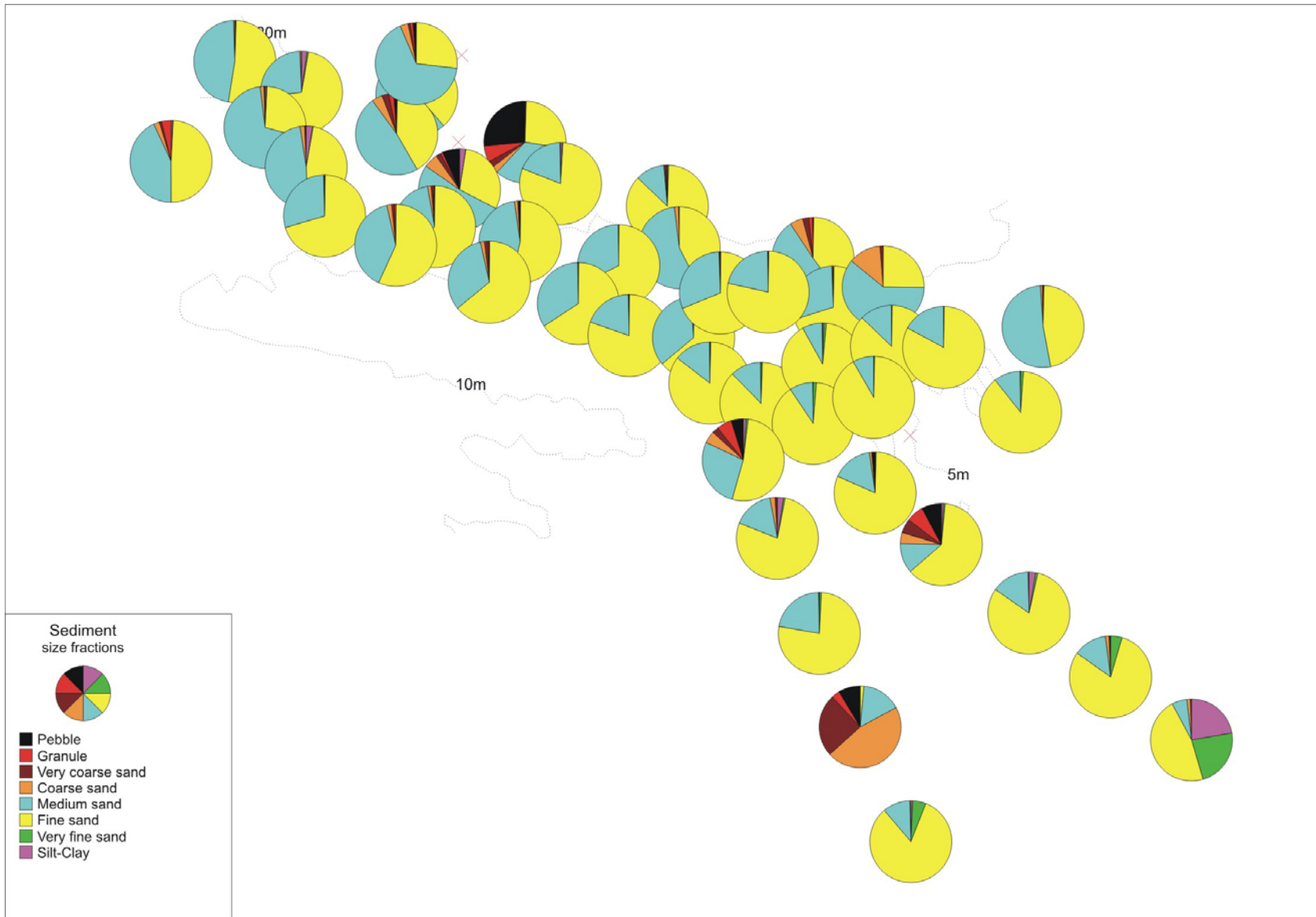


Figure 9. The percentage of sediment in each size category at each of the sampling stations