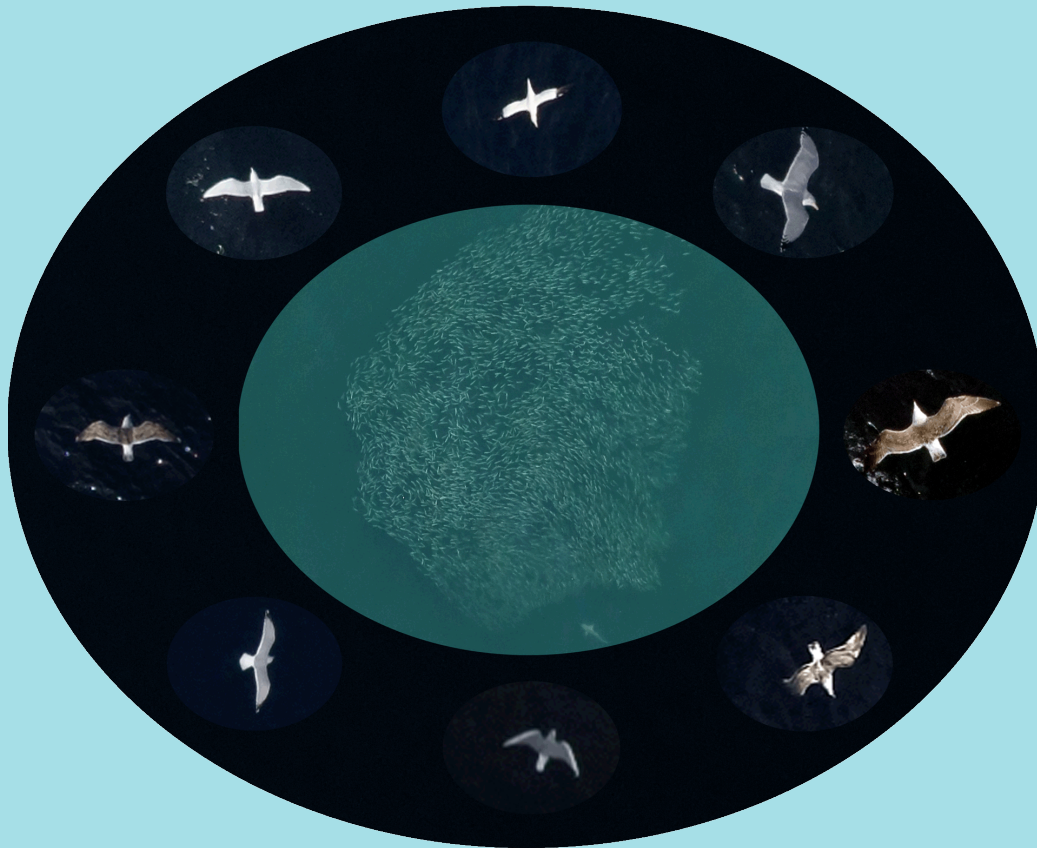


Digital Aerial Baseline Survey of Marine Wildlife in Support of Offshore Wind Energy

Summer 2017 Target Extraction Summary Report



NEW YORK
STATE OF
OPPORTUNITY.

NYSERDA



**NORMANDEAU
ASSOCIATES**

ENVIRONMENTAL CONSULTANTS



Digital Aerial Baseline Survey of Marine Wildlife in Support of Offshore Wind Energy

Summer 2017 Target Extraction Summary Report

Prepared for

New York State Energy Research and
Development Authority
17 Columbia Circle
Albany, NY 12203-6399



Prepared by

Normandeau Associates, Inc.
4581 NW 6th Street, Suite A
Gainesville, FL 32609
352-372-4747
www.normandeau.com



with

APEM, Inc.
747 Southwest 2nd Avenue, Suite 226
Gainesville, FL 32601



January 2018



Introduction

Target extraction for the Summer 2017 survey for the NYSERDA Offshore Planning Area (OPA) was started in August 2017. All target extraction and quality control of target extraction was completed by November 2017.

Overview

The vast majority of the images collected contained no evidence of living organisms. More than 97% of the images from the OPA were blank. Of the 318,741 images analyzed, 311,832 were blank. Of the 31,271 (10.03%) blank images that were re-examined, 71 were determined to contain targets (living organisms) that had been missed in the initial target extraction. The overall quality rate of the initial extraction was 99.77%, well within the quality control criteria established for the project. From the 6,909 images that were not blank, 15,961 targets were sent to taxonomic experts in the species group for identification.

Total Images and Area Surveyed

Area	Total Number of Images Collected	km ² of Analyzed Images within the Survey Area	Percent Coverage	Survey Area (km ²)
OPA	318,741	3,133.5	7.16	43,745.20

Blank Images Detected

Area	Total Images Analyzed	Blank Images			
		Number Detected	Number Sent for QA	Total Percent QA	Total Percent Blank
OPA	318,741	311,832	31,271	10.03	97.83

Target Extraction Quality Control Results

Number of Images for QC	Number of Images QCd as Blank	Number of Images QCd Not Blank	% Agreement Reached
31,271	31,200	71	99.77

Animal Order Found in Image during Extraction QC	Number of Individuals	Number of QCd Images Containing Species Group
Birds	5	5
Fish	49	49
Turtles	17	17
TOTAL	71	71

Targets Detected and Sent for Identification

Group	OPA
Avian	2,964
Fish species	1,792
Fixed Structure	1
Marine Mammal species	1,446
Ray species	7,622
Shark species	1,386
Turtle species	711
Vessel	39
TOTAL	15,961